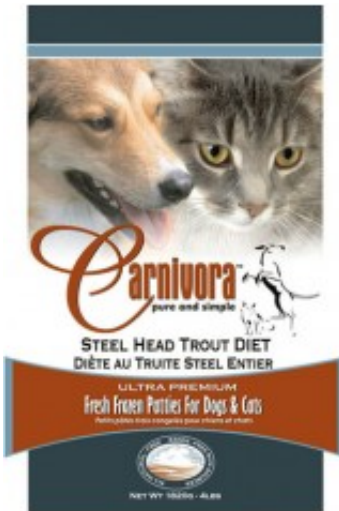


## Steelhead Trout Diet



**Price: \$0.00 CAD**

### Short Description

#### Whole Animal Steelhead Trout Patties

#### Packaging

**4 lb Bag** 8 - 1/2 lb patties/bag

**32 lb Case** 8 - 4lb bags/case

**25 lb Bulk Box** 50 patties loose per box

### Description

Fresh Water Steelhead is a member of the salmon family. This light-tasting fish is a very healthy choice and a great addition to feeding variety in your pet's diet! It contains approximately six grams of omega-3 fatty acids per 8oz patty. Omega-3 fatty acids help protect against disease and arthritis. It's true! Our Steelhead are farmed but they are raised in clear, cool lakes fed by the pristine waters of the Rocky Mountains. This superior environment produces healthy fish! On average less than 0.02% of feed fed to the Steelhead contains any form of therapeutants so it's safe to feed your dog or cat. Both the fish and their environment are monitored regularly during the production process to ensure they meet strict quality standards. These measures are part of the commitment to providing a nutritious product in an environmentally responsible manner. Carnivora is pleased to offer our Fresh Water Steelhead from a HACCP approved processing facility that is qualified QMP (Quality Management Plan) to ensure the product is handled and packaged to specifications that meet and exceed the Canadian Food Inspection Agency's (CFIA) stringent guidelines for quality.

# Nutrition Facts

## Steelhead Trout Diet

Percentage (%) as Received

Moisture.....	58.34%
Ash.....	3.12%
Fat.....	18.73%
Fiber.....	0.94%
Protein.....	19.04%
Sodium.....	0.10%
Phosphorus.....	0.77%
Potassium.....	0.23%
Calcium.....	1.25%
Magnesium.....	0.04%
Sulfur.....	0.18%
Copper mg/kg.....	1.93
Iron mg/kg.....	18.53
Manganese mg/kg.....	2.95
Zinc mg/kg.....	24.48

Total Digestible Nutrients (%) 29.60

Gross Energy (kcal/kg) 2,839.11

Calories/8oz (227g) patty = 645.90

Product Gallery

